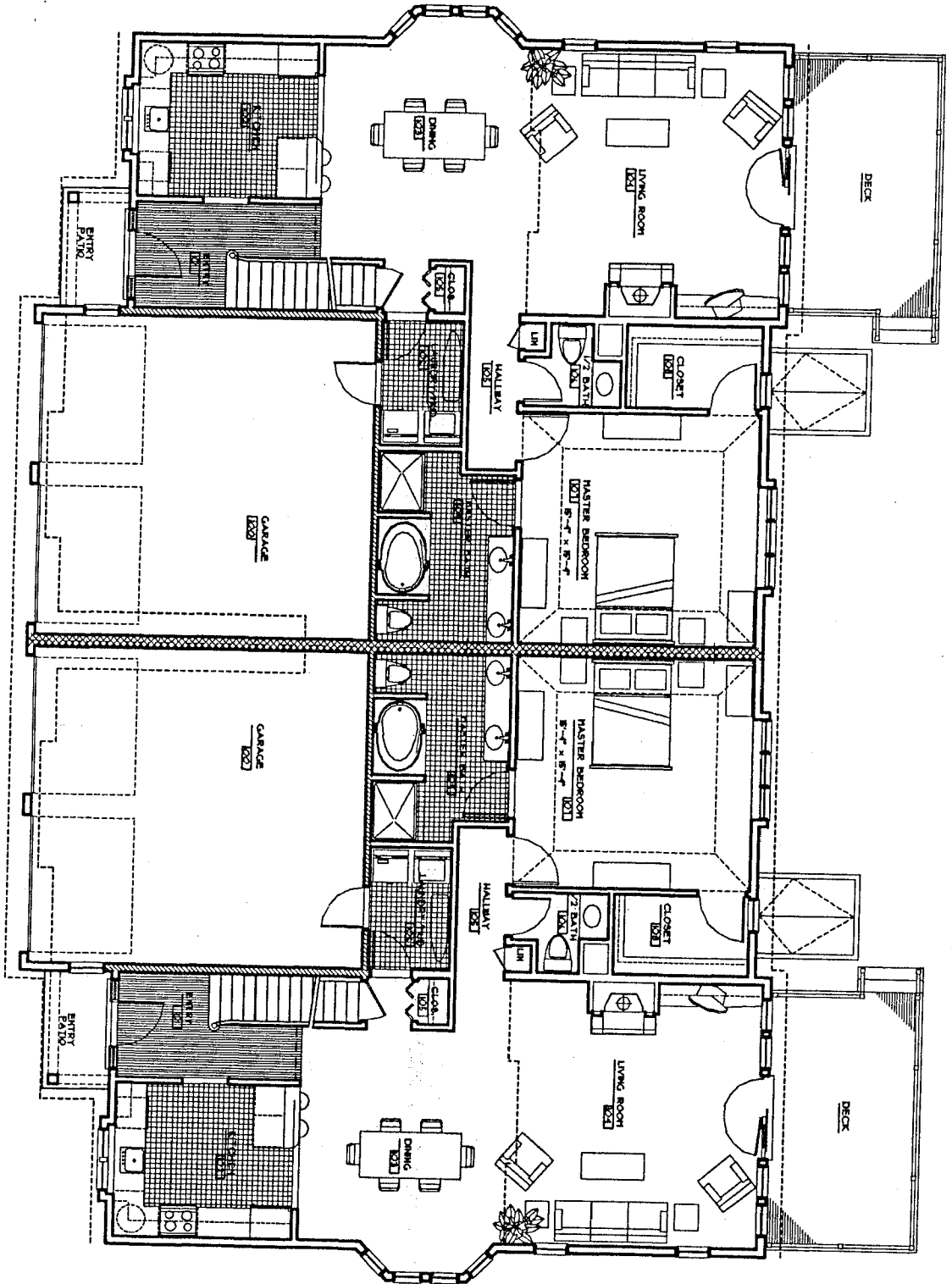


3

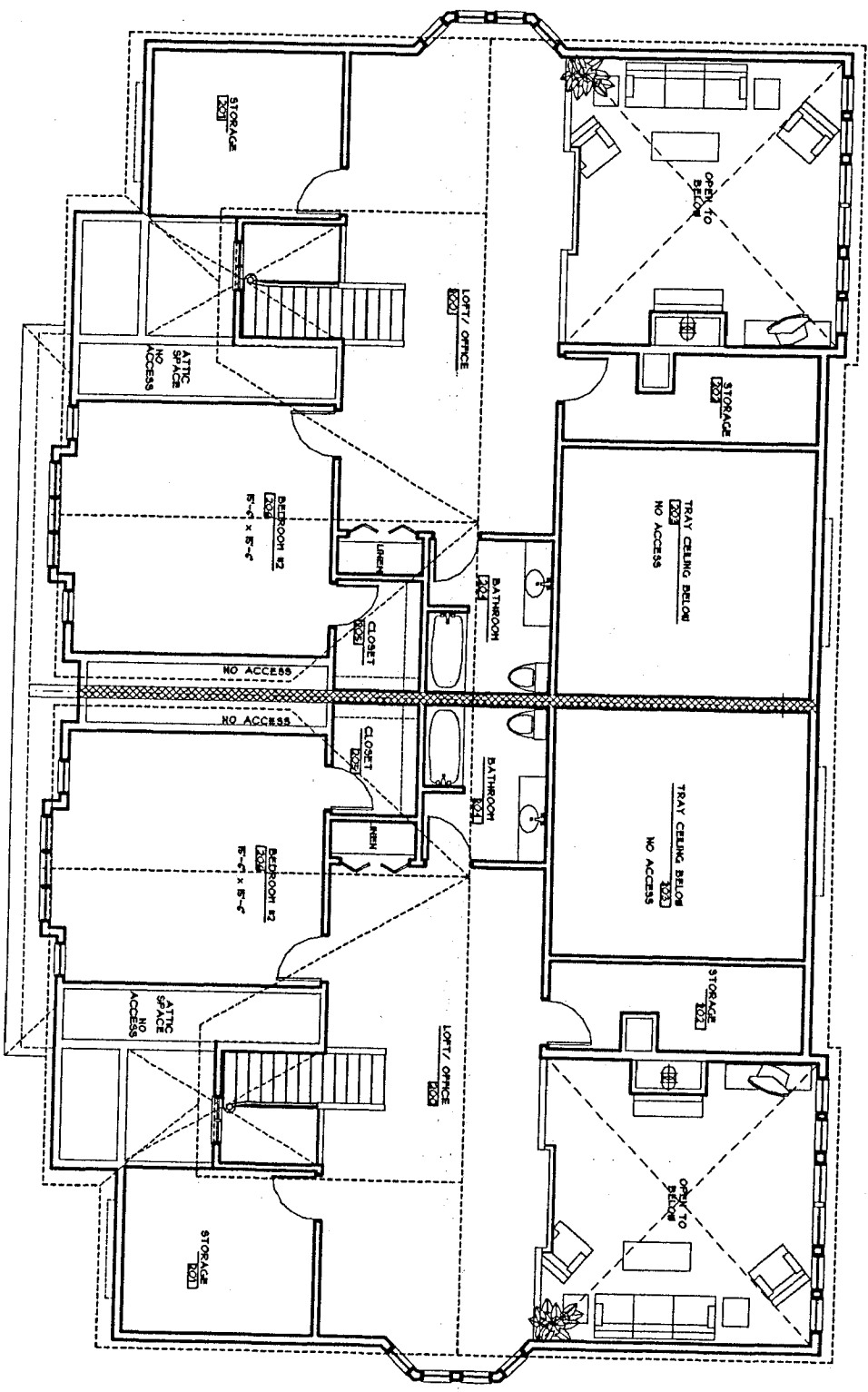
BASEMENT PLAN - TYPICAL BUILDING

SCALE: 3/8" = 1'-0"

1
A
FIRST FLOOR PLAN - TYPICAL BUILDING
SCALE: 1/8" = 1'-0"

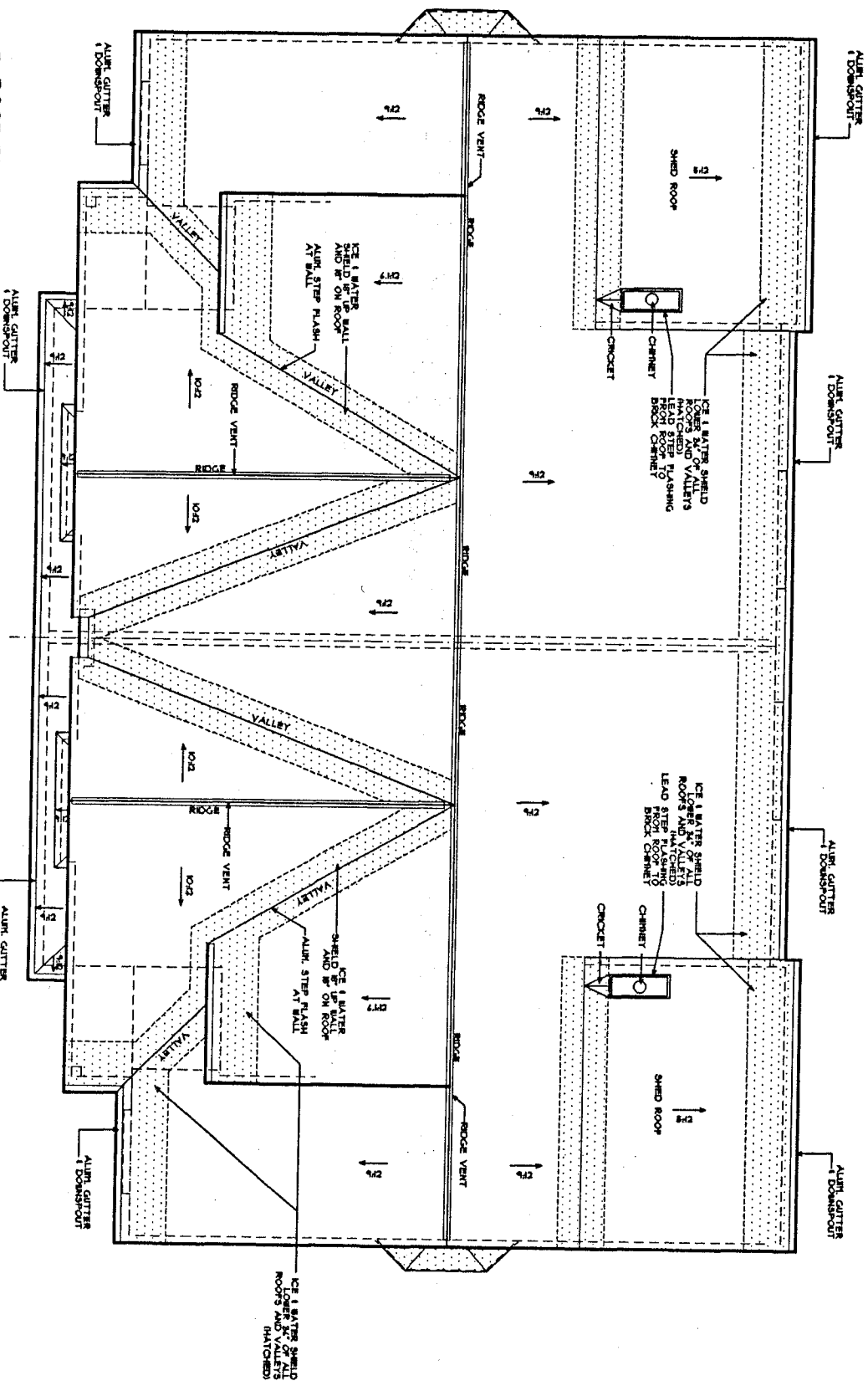


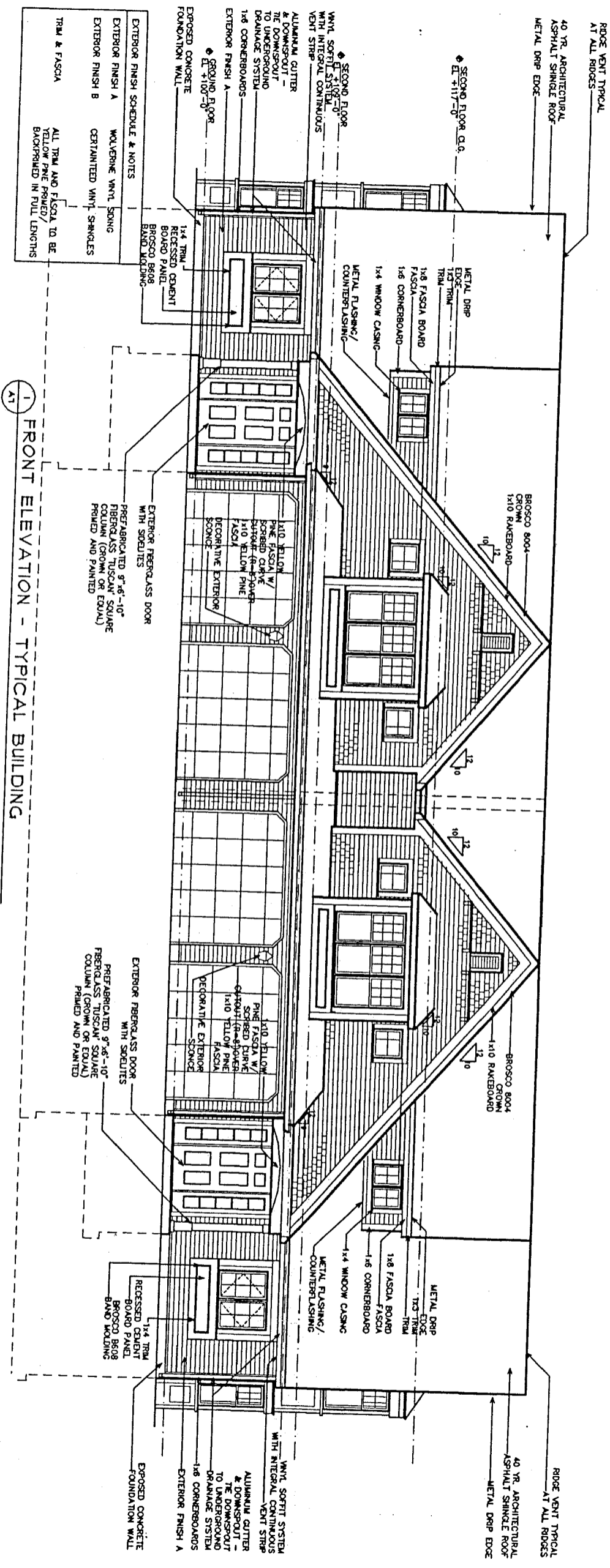
2 SECOND FLOOR PLAN - TYPICAL BUILDING
 AS
 SCALE: 1/8" = 1'-0"



ROOF PLAN - TYPICAL BUILDING

SCALE 3/8" = 1'-0"





1 FRONT ELEVATION - TYPICAL BUILDING

EXTERIOR FINISH A	WOLVERINE VINYL SOING
EXTERIOR FINISH B	CERTAINTEED VINYL SHINGLES
TRIM & FASCIA	ALL TRIM AND FASCIA TO BE YELLOW PINE PRIMED/BACKPRINTED IN FULL LENGTHS

RIDGE VENT TYPICAL AT ALL RIDGES

40 YR. ARCHITECTURAL ASPHALT SHINGLE ROOF METAL DRIP EDGE

SECOND FLOOR O.G. E.T. +117'-0"

VINYL SOFFIT SYSTEM WITH INTEGRAL CONTINUOUS VENT STRIP

ALUMINUM GUTTER & DOWNSPOUT TO UNDERGROUND DRAINAGE SYSTEM 1x6 CORNERBOARDS EXTERIOR FINISH A

EXPOSED CONCRETE FOUNDATION WALL

1x4 TRIM RECESSED CEILING BOARD PANEL BROSCO B508 BAND MOLDING

METAL DRIP EDGE 1x3 TRIM

1x8 FASCIA BOARD 1x6 CORNERBOARD 1x4 WINDOW CASING

METAL FLASHING/COUNTERFLASHING

BROSCO 8004 CROWN 1x10 RAKEBOARD

12/10

10/12

1x10 YELLOW PINE FASCIA W/ SCRIBED CURVE BUTT 4x4-DOOR 1x10 YELLOW PINE FASCIA DECORATIVE EXTERIOR SOING

EXTERIOR FIBERGLASS DOOR WITH SOULITES

PREFABRICATED 9'-6"-10" FIBERGLASS TUSCANY SQUARE COLUMN (CROWN OR EQUAL) PRIMED AND PAINTED

12/10

10/12

BROSCO 8004 CROWN 1x10 RAKEBOARD

12/10

10/12

1x10 YELLOW PINE FASCIA W/ SCRIBED CURVE GYBOUT (4x4-DOOR) 1x10 YELLOW PINE FASCIA DECORATIVE EXTERIOR SOING

EXTERIOR FIBERGLASS DOOR WITH SOULITES

PREFABRICATED 9'-6"-10" FIBERGLASS TUSCANY SQUARE COLUMN (CROWN OR EQUAL) PRIMED AND PAINTED

METAL DRIP EDGE 1x3 TRIM

1x8 FASCIA BOARD 1x6 CORNERBOARD 1x4 WINDOW CASING

METAL FLASHING/COUNTERFLASHING

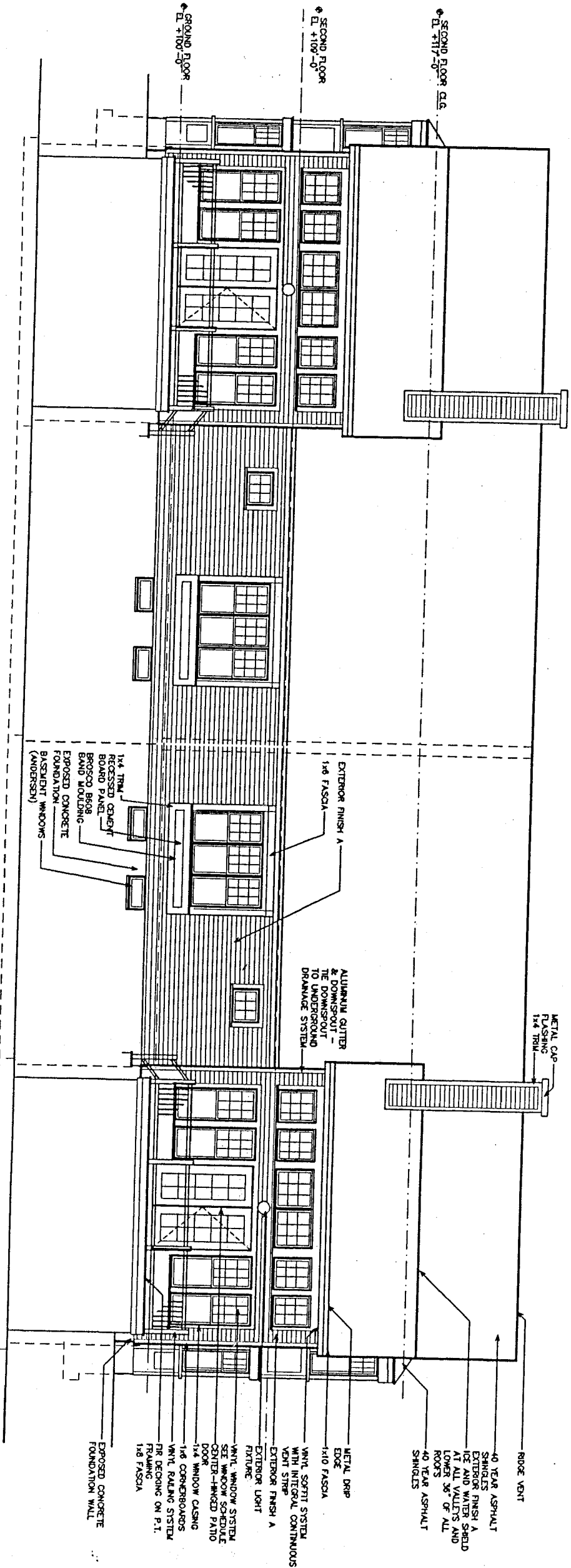
RIDGE VENT TYPICAL AT ALL RIDGES 40 YR. ARCHITECTURAL ASPHALT SHINGLE ROOF METAL DRIP EDGE

VINYL SOFFIT SYSTEM WITH INTEGRAL CONTINUOUS VENT STRIP

ALUMINUM GUTTER & DOWNSPOUT TO UNDERGROUND DRAINAGE SYSTEM 1x6 CORNERBOARDS EXTERIOR FINISH A

EXPOSED CONCRETE FOUNDATION WALL

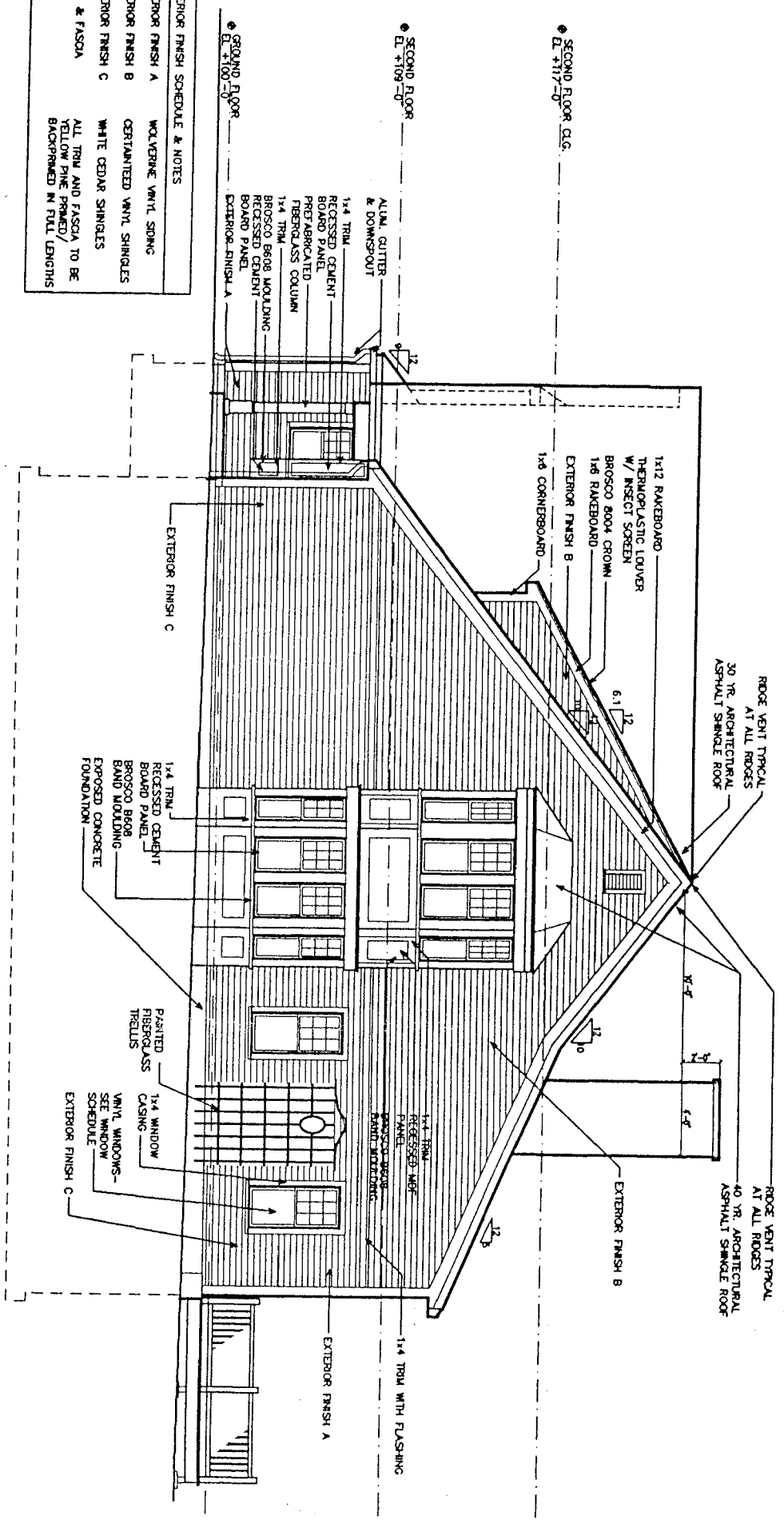
1x4 TRIM RECESSED CEILING BOARD PANEL BROSCO B508 BAND MOLDING



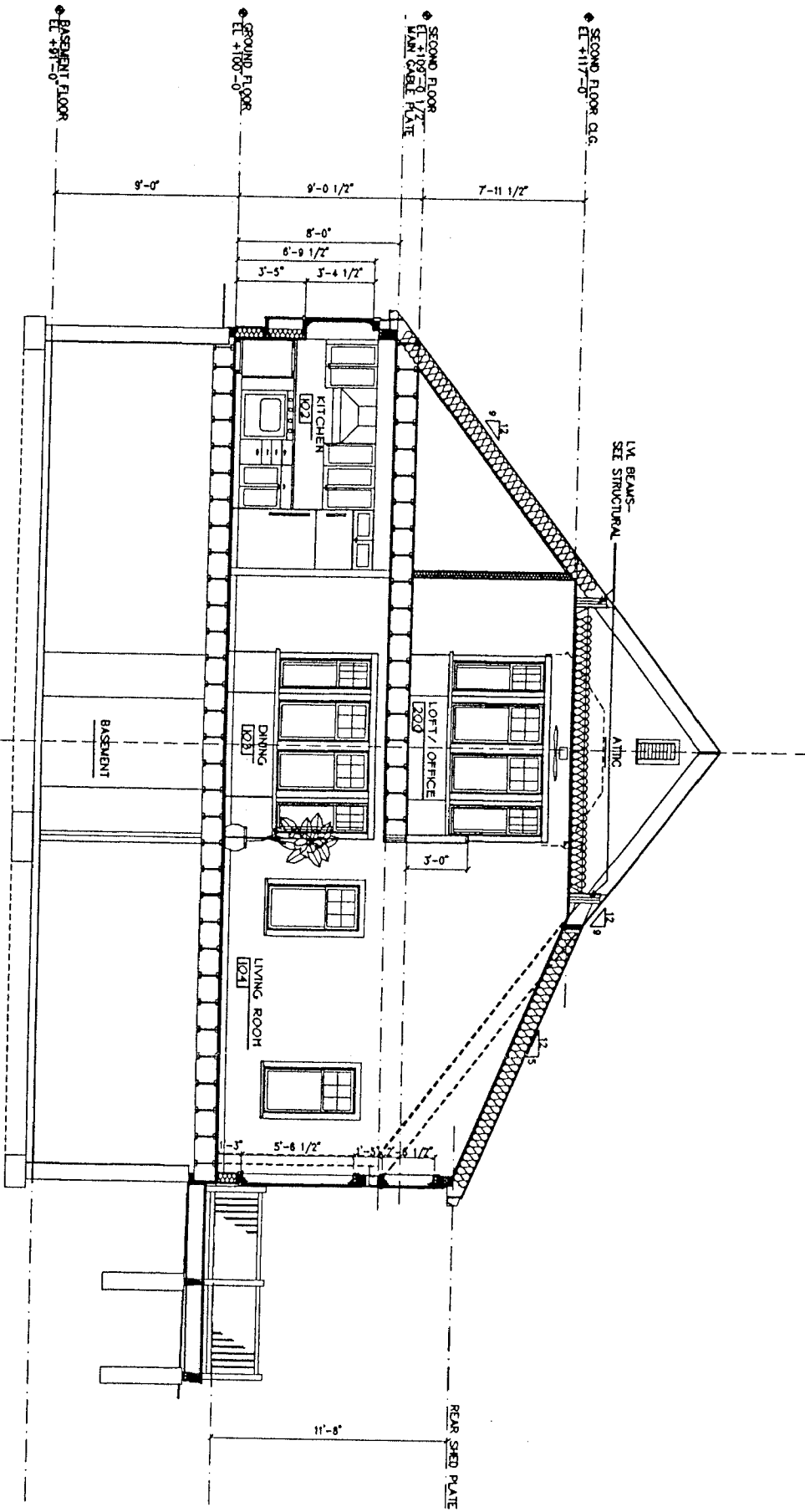
3 REAR ELEVATION - TYPICAL BUILDING
A/B

EXTERIOR FINISH SCHEDULE & NOTES	
EXTERIOR FINISH A	WOLVERINE VINYL SIDING
EXTERIOR FINISH B	CERTANTITE VINYL SHINGLES
TRIM & FASCIA	ALL TRIM AND FASCIA TO BE YELLOW PINE PRIMED / BLACK-PAINTED IN FULL LENGTHS

EXTERIOR FINISH SCHEDULE & NOTES	
EXTERIOR FINISH A	WOLVERINE VINYL SIDING
EXTERIOR FINISH B	CERTAINTED VINYL SHINGLES
EXTERIOR FINISH C	WHITE CEDAR SHINGLES
TRIM & FASCIA	ALL TRIM AND FASCIA TO BE YELLOW PINE PRIMED/BACKPRIMED IN FULL LENGTHS



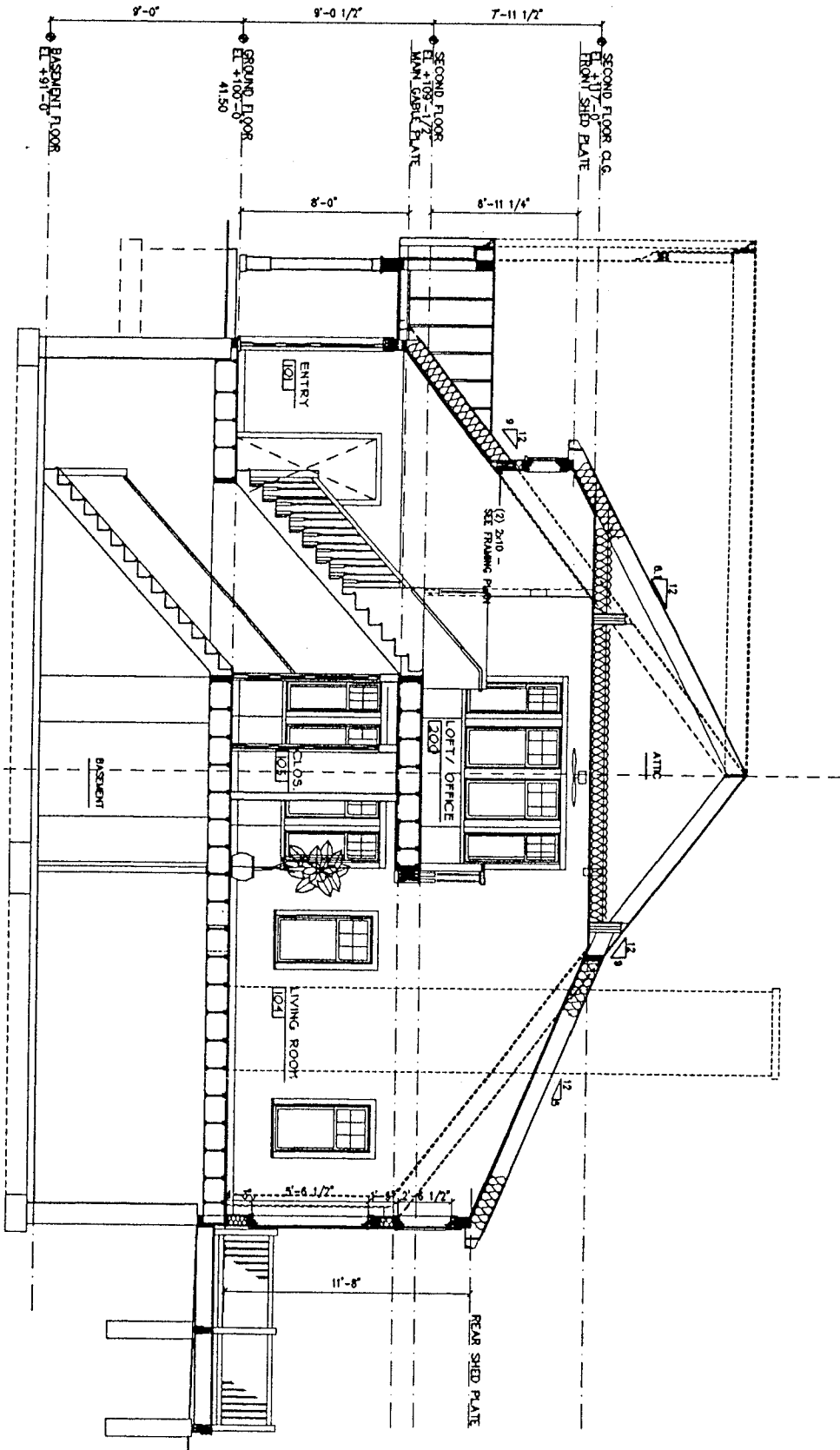
4
A8
RIGHT SIDE ELEVATION - TYPICAL BUILDING



A
 AS

TRANSVERSE SECTION A - TYPICAL BUILDING KITCHEN

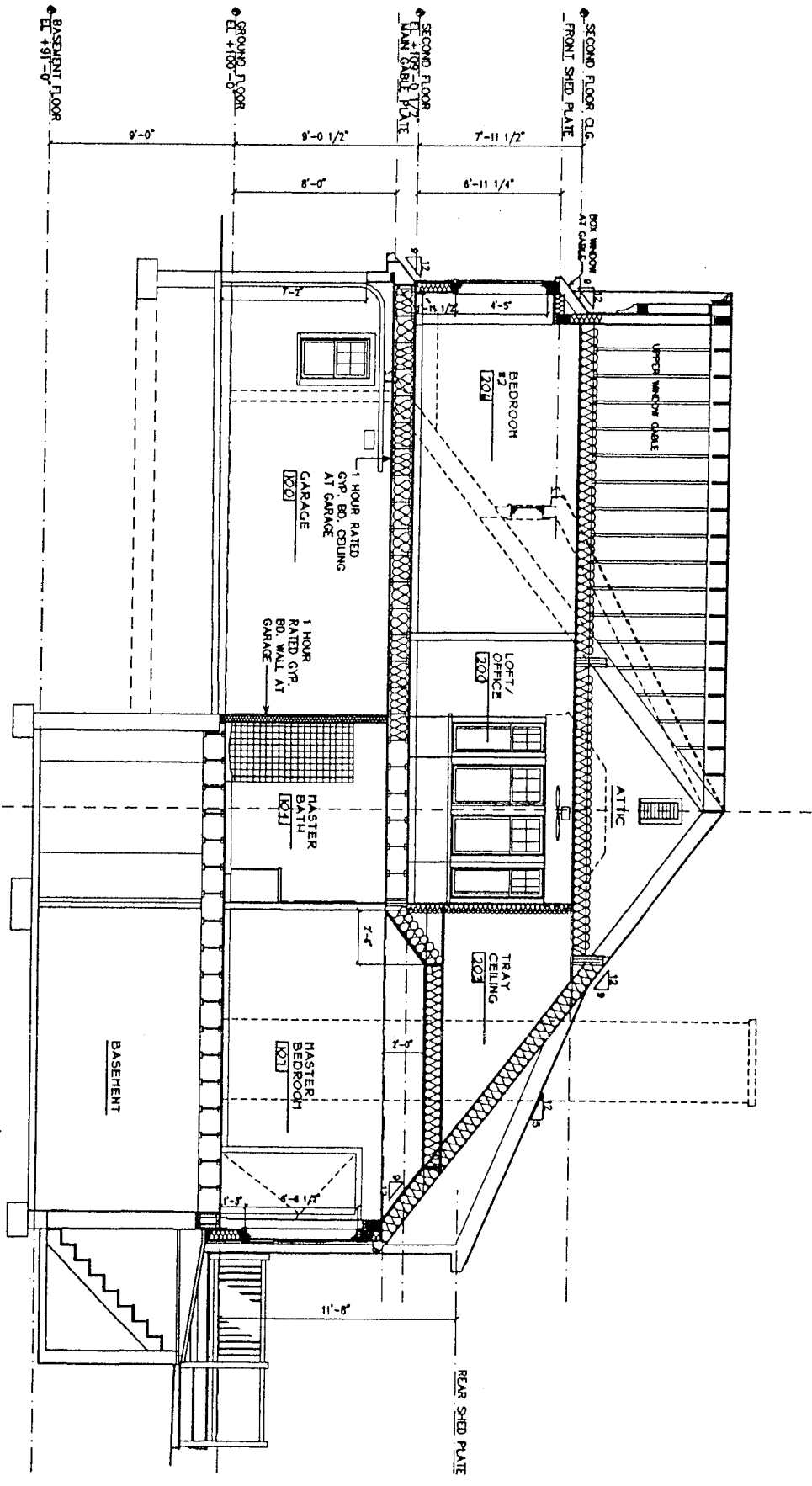
SCALE: 1/8" = 1'-0"



AS

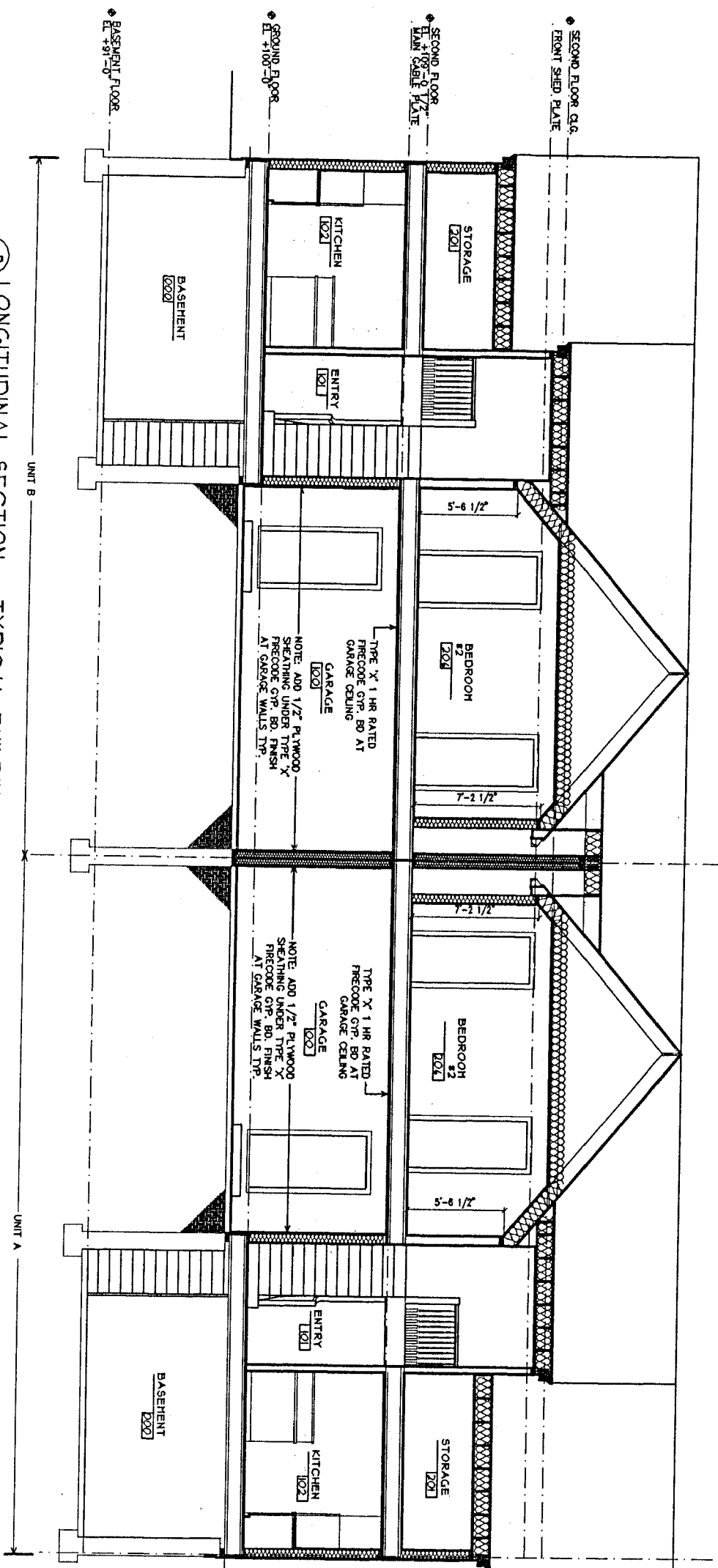
B TRANSVERSE SECTION B - TYPICAL BUILDING ENTRY

SCALE: 1/8" = 1'-0"



C TRANSVERSE SECTION C - TYPICAL BUILDING GARAGE
 AT

SCALE: 1/8" = 1'-0"



D
AT

LONGITUDINAL SECTION - TYPICAL BUILDING

SCALE: 1/8" = 1'-0"

UNIT B

UNIT A

**CRANBERRY KNOLL
TABULATION OF PROPOSED BUILDINGS**

BUILDING TYPE AND NUMBER OF BEDROOMS

Two bedroom duplex townhouses

Ground Floor Master Bedroom 15'4" x 15'4"

Second Floor Bedroom 15'6" x 15'6"

Size the same in market and affordable units

TYPICAL UNIT SQUARE FOOTAGES

Building (coverage)

1st Floor Gross SF w/ Entry Stoop/Deck/Bulkhead/Garage **2100 SF**

Deck 180 SF

Bulkhead 38 SF

Entry Stoop 35 SF

Garage 480 SF

Floor Area (Gross)

1st Floor Gross with Garage 1847 SF

1st Floor Gross without Garage 1367 SF

2nd Floor Gross 1055 SF

Total Gross Floor Area with Garage 2902 SF

Total Gross Floor Area without Garage 2422 SF